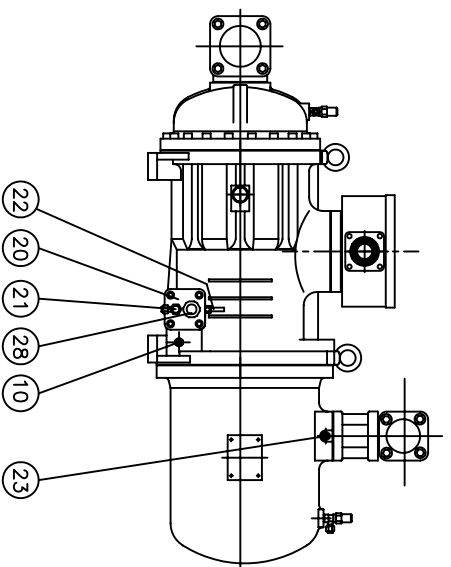
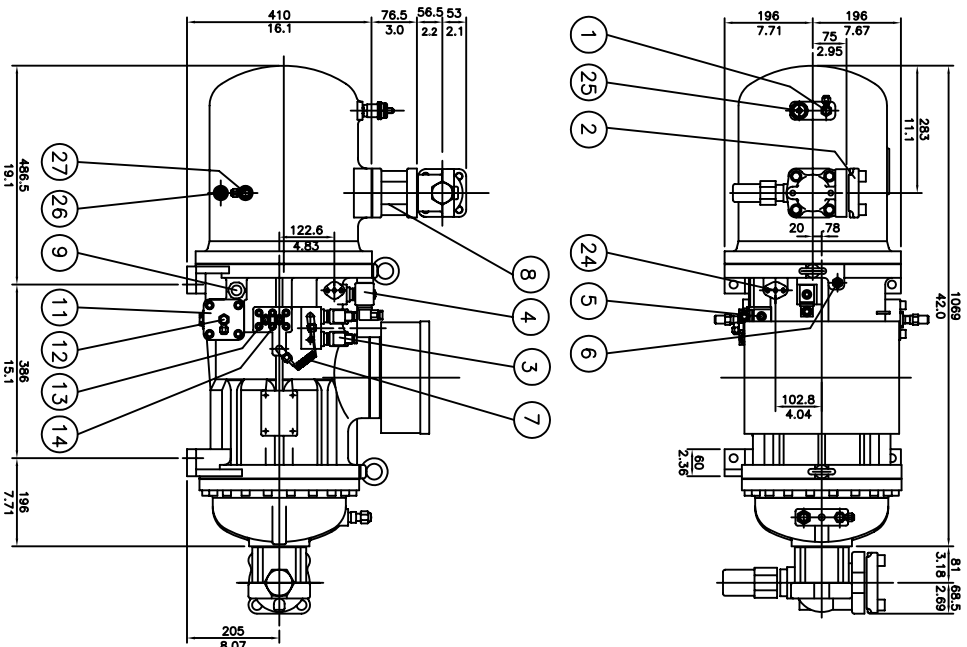


No.	Name	Note	No.	Name	Note
1	Angle valve	1/4"Flare	15	Angle valve	1/4"Flare
2	Discharge flange	1 1/2"	16	Refrigerant service valve	1/4"Flare
3	Solenoid valve	33%(NC)	17	Liquid injection connector	3/8"Flare, option
4	Solenoid valve	66%(NC)	18	Suction flange	2 1/2"
5	Solenoid valve	Stepless(NO), option	19	Cable box	
6	Liquid(oil or refrigerant) injection connection	1/4"Flare, option	20	Service flange	
7	Capillary		21	Oil drain valve	option
8	Check valve	1 1/2"	22	Oil level switch	option
9	Oil sight glass		23	Discharge temp. sensor	110°C
10	Oil heater	150W/300W	24	Economizer connector	5/8"Flare, option
11	Oil filter cartridge		25	Safety Valve	5/8"Flare, option
12	Oil pressure differential switch	option	26	Oil temp. sensor	option
13	Oil connector(out)	3/8"Flare, option	27	Over flow port	option
14	Oil connector(in)	3/8"Flare, option	28	Oil sight glass	1/4"Flare option

*All stop valves are optional.



Dimensional Outline Drawing & Component Description
for Stepless or Modulating – Type Capacity Control Application

Hanbell Model RC2-180B
Date and Rev. 07/31/2008 A
Drawn By B.Loi



Micro Control Systems, Inc.

5877 Enterprise Parkway
Fort Myers, Florida 33905
Tel. (239) 694-0089 Fax (239) 694-0031
E-mail: compressors@mcscontrols.com

Hanbell Precise Machinery Co., Ltd.

